

SPECIFICATION AS PER IS:2705/1992

RATIO : 400/5A

BURDEN : 5VA

CLASS : 0.5

I/LEVEL : 0.66KV/3.0KV

FREQUENCY : 50Hz

S.T.C : 5.0KA FOR 1.0SEC.

I.S.F <= 5

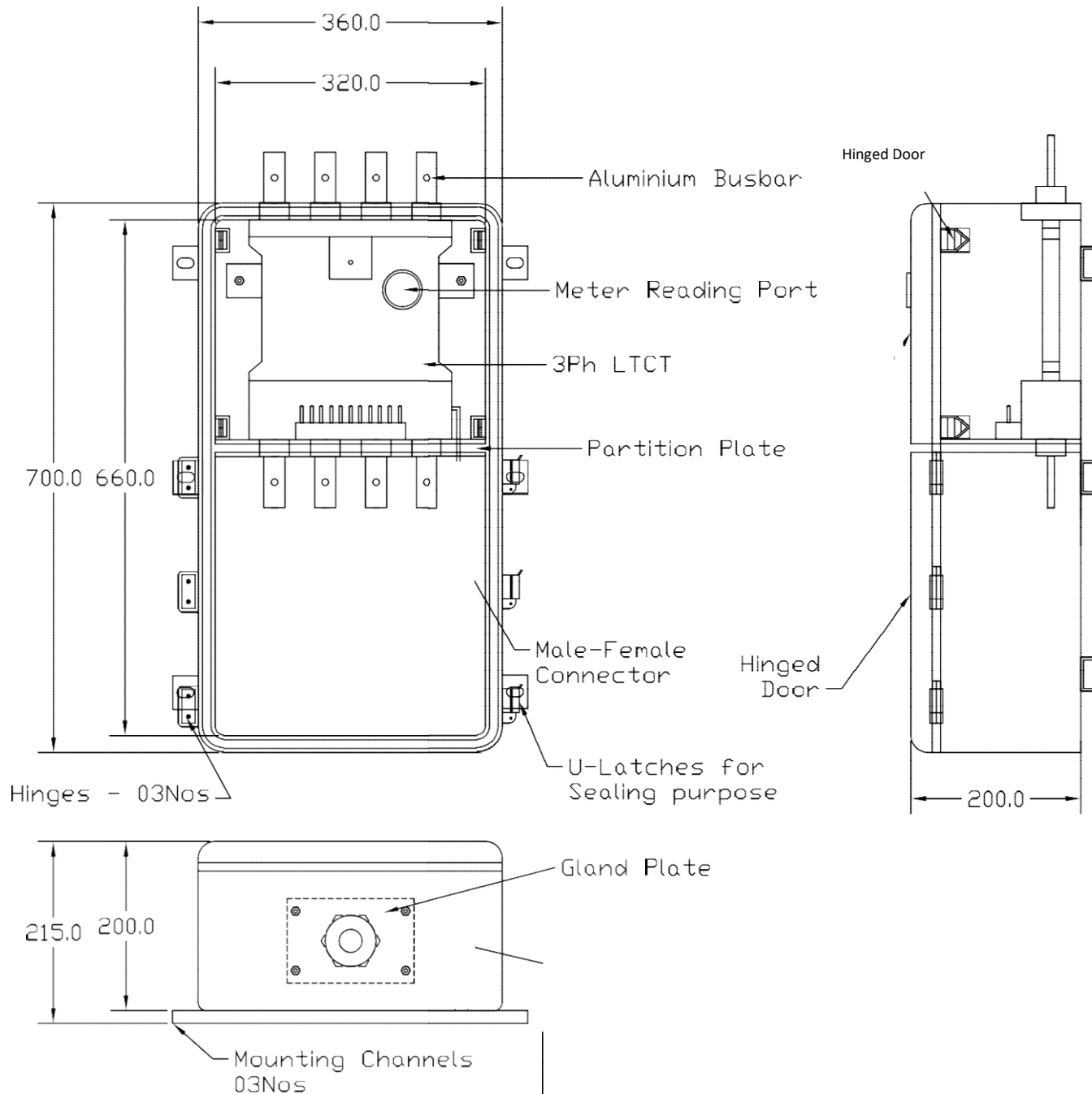
TYPE : RESIN CAST BAR PRIMARY

PRI. BUSBAR SIZE : ALUMINIUM 40X10MM

TOP COVER OF BOX - TRANSPARENT POLYCARBONATE.

BASE OF BOX - TRANSPARENT POLYCARBONATE.

BASE CHANNEL & GLAND PLATE - MS 16 SWG (ZINC PLATED),
ALL THE HARDWARE WILL BE ELECTROPLATED.



- Material of LTCT shall be epoxy casted with epoxy transparent
- Meter pin shall be as per meter block
- Meter box shall be transparent Polycarbonate
- Indicative drawing.

SPECIFICATION AS PER IS:2705/1992

RATIO : 200/5A or 100/5A

BURDEN : 5VA

CLASS : 0.5

I/LEVEL : 0.66KV/3.0KV

FREQUENCY : 50Hz

S.T.C : 5.0KA FOR 1.0SEC.

I.SF \leq 5

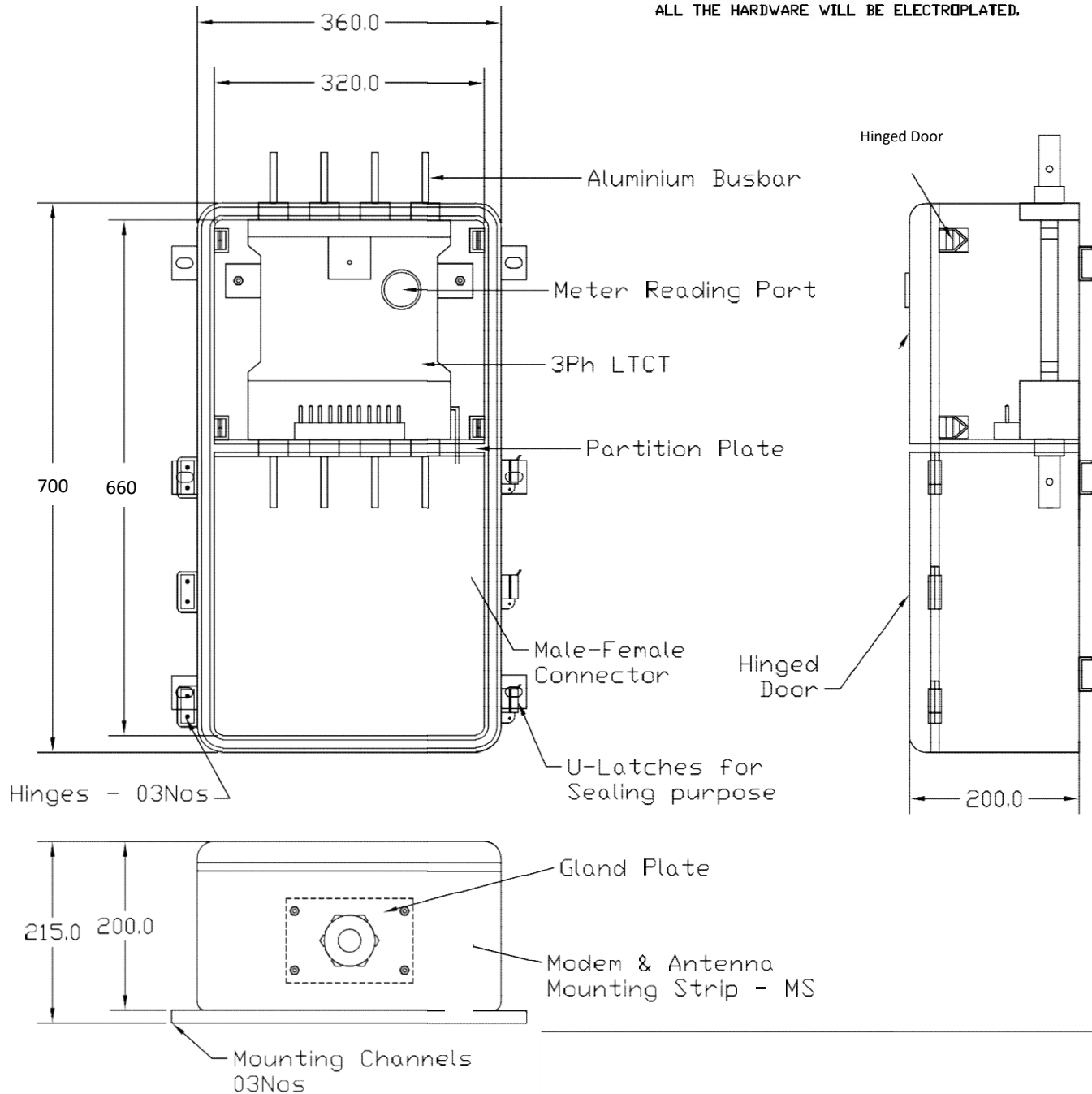
TYPE : RESIN CAST BAR PRIMARY

PRI. BUSBAR SIZE : ALUMINIUM 25X8MM

TOP COVER OF BOX - TRANSPARENT POLYCARBONATE.

BASE OF BOX - TRANSPARENT POLYCARBONATE.

**BASE CHANNEL & GLAND PLATE - MS 16 SWG (ZINC PLATED),
ALL THE HARDWARE WILL BE ELECTROPLATED.**



- Material of LTCT shall be epoxy casted with epoxy transparent
- Meter pin shall be as per meter block
- Meter box shall be transparent Polycarbonate
- Indicative drawing.