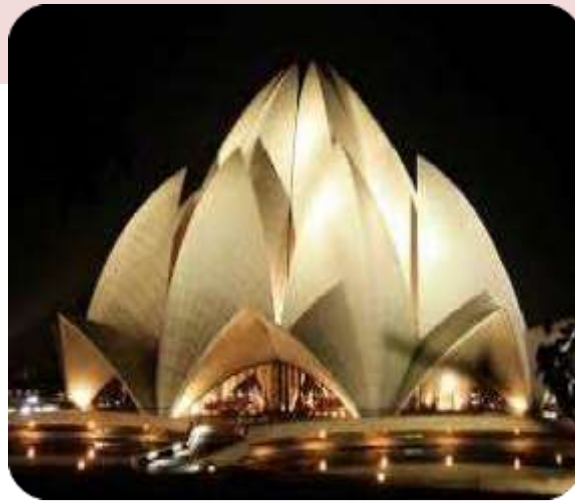
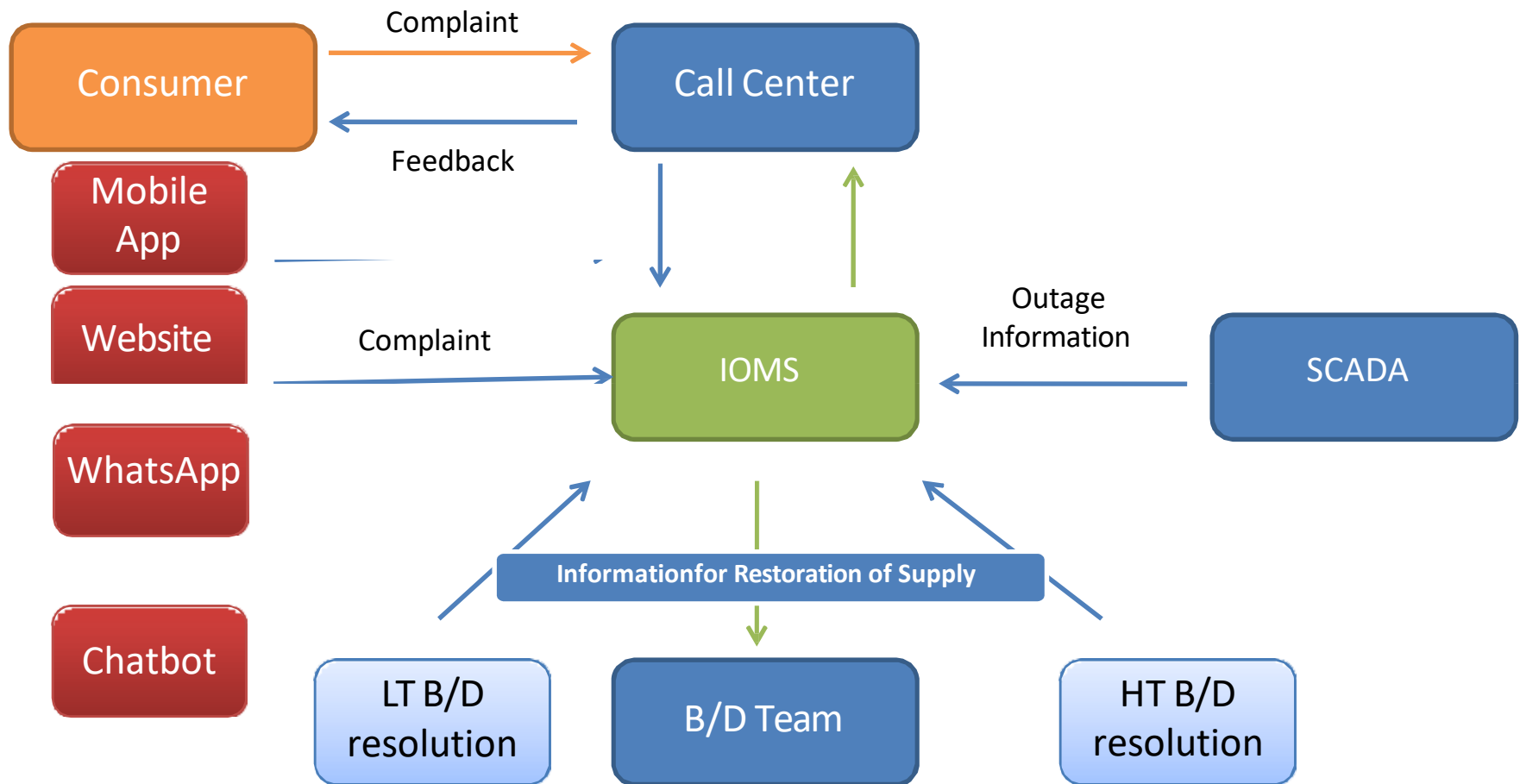

BSES Rajdhani Power Limited



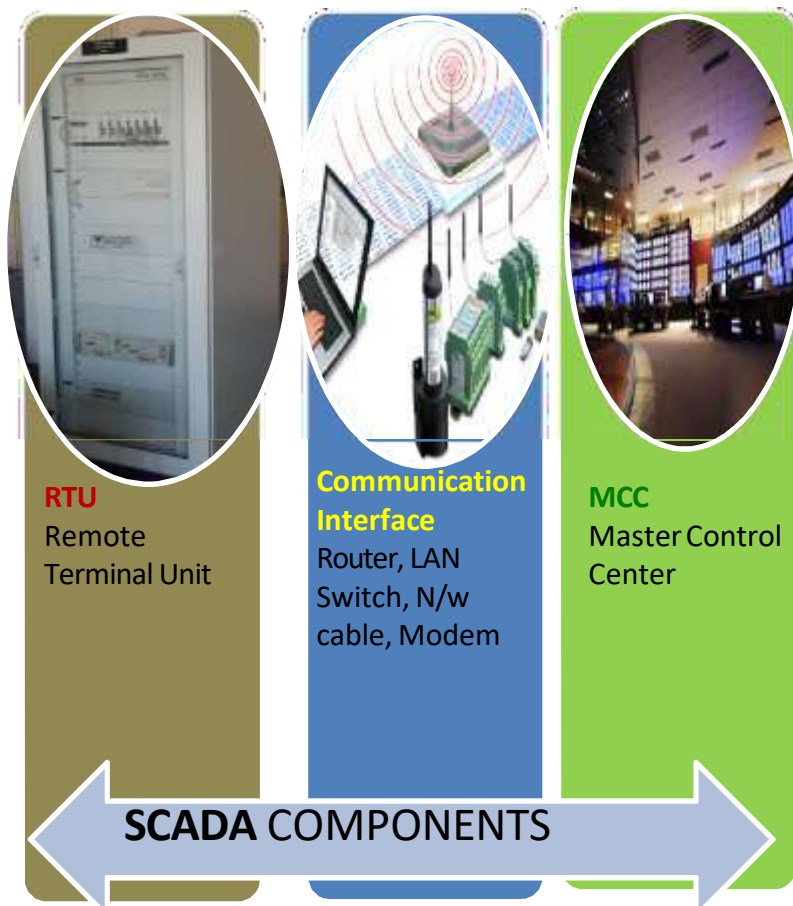
BSES

Outage Management at BRPL

Outage Management at BRPL



SCADA at BRPL



- Upgraded & Latest ABB Network Manager 6.5
- User Defined Control Sequence
- Flexible Operator Authority
- Instant and Historical Trending
- Inbuilt ICCP application for Data Exchange with DTL

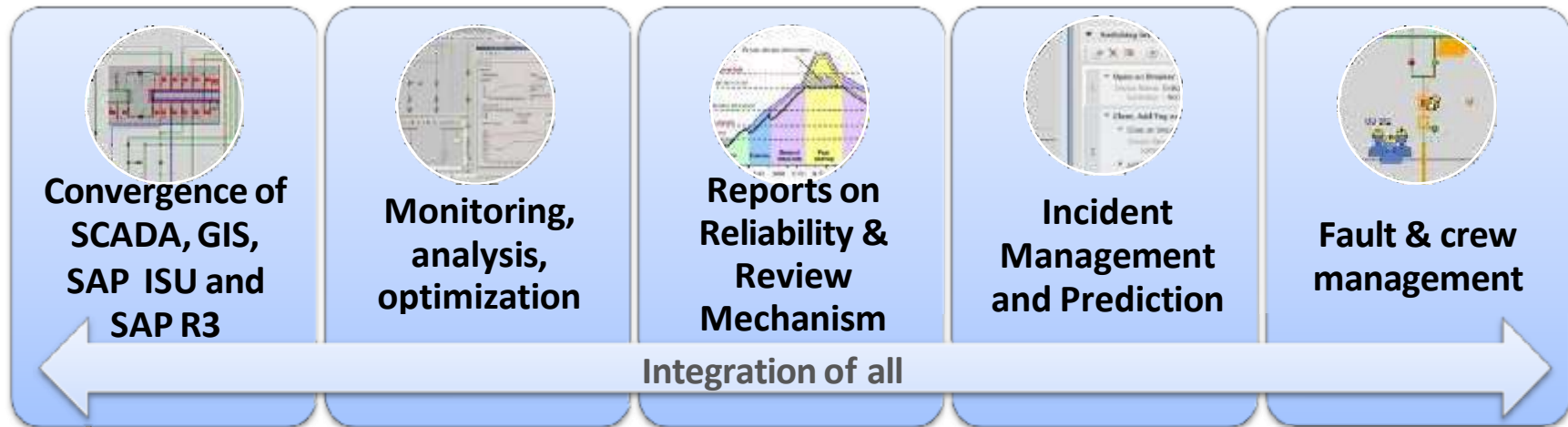
Benefits derived after SCADA implementation

- Remote operations of Circuit Breakers and Isolators
- Remote operations on load tap positions of transformers
- Automatic Capacitor Switching
- Maintain voltage profiles
- Improved Load Management in the event of Under Frequency
- Cable fault isolation and supply restoration
- Station information, Battery status
- Power transformer condition monitoring – WTI,OTI Tap change count, OLTC status
- Analysis of Feeder loadings, trends, and corrective measures
- Event Analysis up to micro second resolution in case of contingencies

Intelligent Outage Management System

I-OMS – GIS based Intelligent Outage Management System at BRPL

Collection of Applications Designed to Monitor & Manage the Entire Distribution Network of BRPL



Integrates coordinates and displays data from many sources.

Prediction Engine for intelligent grouping of complaints

One step on the way to the “smart grid.”

Includes computer algorithms to aid the decision making

- Helps in assessing where troubles exist and how extensive the outage is.
- Helps to identify which customers are affected.
- Helps prioritize restoration efforts.
- Helps in calculating restoration time.
- Helps manage crews and other resources.
- Keeps track of critical infrastructure such as emergency and fire departments so restoration can be prioritized.

I-OMS – GIS based Intelligent Outage Management System at BRPL

Dashboard



Complaint Registration Page

BSES
BSES Yamuna Power Limited

Intelligent Outage Management System

DOMS
11:57:51 [5 Dec 2022]

HOME CMS DOMS BMS DBS TEAM REPORTS ANALYSIS SAFETY NOTICE
Logout Login

Complaint Registration

Area: [] Division: [] Complaint Centre: [] Complaint Category: [] Type of Fault: [] Caller Name: [] Caller Phone: [] Meter No: [] Consumer Category Address: [] Category: [] Node Officer Name: [] Special Customer: []

Do Not: [] Meter Contact No: [] Email ID: [] Complaint Center Phone: [] Consumer Name: [] Connection Category: [] Registered Phone No: [] Outage Since (hour:min): [] Remarks: [] Sub Category: [] Node Officer Mobile: [] Consumer Category: []

Outage Area Consumer History

Update Page Register Field Details Reset

Areas under Outage Information Page

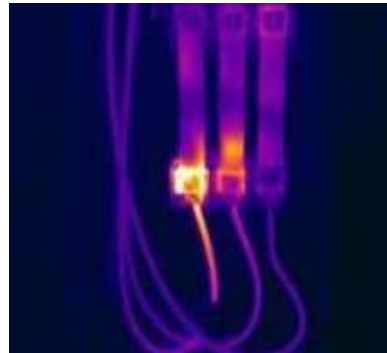
Reliability Improvement Drivers

Initiatives: Reliability Improvement... *24x7 Power for all*



PD Measurement

- Tests conducted are on 11kV / 33kV - End Boxes
- Partial Discharge is measured in is measured in decibels
- In case of PD in identified – house repairs are done.



Hot Spot Scanning

- Temperature on LT side of DT measured using the Temperature Guns
- Manages High Temperature not visible through Naked Eye
- Proactive Maintenance undertaken



Trfs Oil quality Testing

- Predictive On-Site Measurement of Vital Parameters of Transformer Oil like BDV, Acidity etc.
- Maintenance is carried on affected DT's



RMU & LT ACB Repair Workshop

- Established RMU Workshop for In House repairing
- Faster repairing Cycle
- Approx. 200 RMU's repaired

Initiatives: Reliability Improvement... *24x7 Power for all*



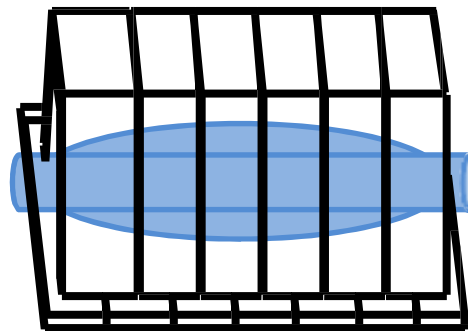
Predictive Maintenance

- Movement from Preventive to Predictive Maintenance based on scheduled inspections
- Reduction in outage events and duration



FPI Installation

- Activation of Fault Passage Indicators on installed RMU's
- Improvement in Fault location and Faster Resolution



Coffins to Protect cable Joints

- RCC Protective covers being put up over the underground joints
- Provides safety against damages by other agencies digging



Data Analytics

- Leading to prediction of overloaded and unbalanced transformers
- Feeders Repeated Failure Analysis
- RMU failure analysis

Initiatives: Reliability Improvement... *24x7 Power for all*



Transformer overload protection

- Automated application to monitor and control overloading on power transformer.
- No outage of power transformer in recent two summer seasons.



Shutdown Monitoring & online PTW system

- Daily monitoring of planned shutdowns activity and follow up with division
- Online permit to work development for easy shutdown and clearance during outage.



Mobile Based Applications

- SCADA LIVE application developed for instant access of BRPL network parameters for efficient control and monitoring.



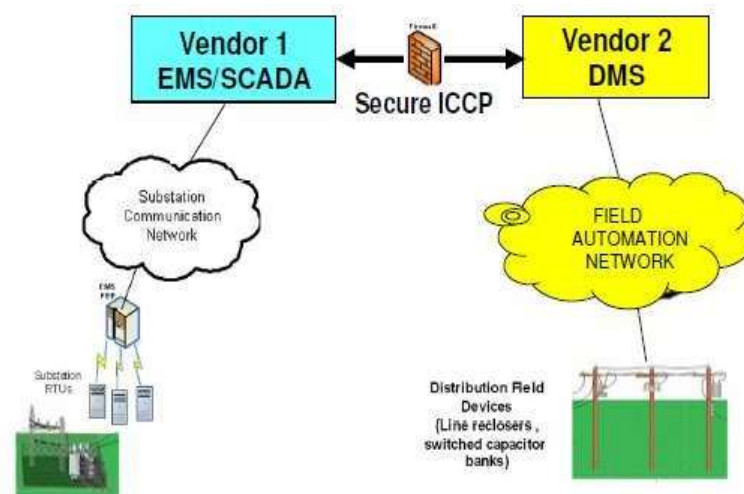
Auto Load transfer

- Automated load transfer system in case of any outage at grid level at critical installations using advance technology instruments.

Initiatives: Reliability Improvement... *24x7 Power for all*

Distribution Management System at 11 KV

- RMU Automation at 11 KV S/Stn level
- Monitoring and Control of 11 KV Network from SCADA Center
- Fault isolation & remote restoration



Key Interventions for Loss drive

DT Cleaning

- Removal of Illegal Tapping
- Identification of unbilled Street Light points
- Relocation/replacement of meters in box to minimize tampering
- Use of armoured cable

Use of Analytics for Theft control



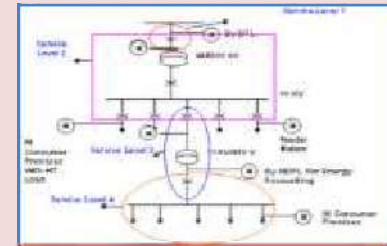
"Meter Relocation" program



Anti Theft derive



HVDS & LTABC



Energy Audit at DT level

THANK YOU
www.bsesdelhi.com